



established 1919



Chartered Surveyors
Residential Sales + Lettings
Commercial Sales + Lettings
Property Management
Surveys + Professional

40 Clarence Street,
Southend-On-Sea, SS1 1BD

t: 01702 433663

e: residential@sorrellproperty.co.uk

www.sorrellproperty.co.uk



2 bedroom Apartment/Flat for sale, Prittlewell Square, Southend On Sea, Essex
£290,000

Full description

Call us on **01702 433663** to view this property or visit sorrellproperty.co.uk for more details



These particulars do not constitute an offer or contract, the purchaser should satisfy himself independently as to the accuracy of the measurements, description and statements contained herein. All negotiations are to be conducted via Sorrell

We are favoured with instructions to offer for sale this attractive ground floor garden flat, being situated within the prestigious location of Prittlewell Square in the Clifftown Conservation Area within a converted Victorian townhouse. The accommodation comprises, lounge, kitchen diner, two bedrooms, bathroom/wc and has the advantage of full gas central heating and benefits from own private rear garden. There is a 125 year lease with nil ground rent.

Features

- CLIFFTOWN CONSERVATION AREA
- ONE/TWO BEDROOMS
- WELL MAINTAINED THROUGHOUT
- OWN REAR GARDEN

Fully self contained with steps leading to private hardwood door leading on to ,

Entrance Hall

Deep storage cupboard, recessed spotlights, radiator, doors off onto,

Lounge - 4.04m x 3.58m (13'3 x 11'9)

Sash bay window to front, stripped flooring, feature fireplace with book shelving either side of chimney breast, radiator,

Kitchen/Diner - 3.51m x 3.20m (11'6 x 10'6)

Fitted with a comprehensive range of cupboard and draw base units and eye level wall cupboards, rolled top work surfaces with splashbacks, integrated five ring gas hob with oven and grill under and extractor over, sink unit with single drainer, single bowl and mixer tap, integrated washing machine, integrated under counter fridge and freezer, double glazed sash window to rear, double glazed half door leading onto rear garden, concealed gas boiler serving central heating system and domestic hot water, radiator.

Bedroom 1 - 3.48m x 3.05m (11'5 x 10)

Double glazed sash window to rear, fitted cupboards, stripped flooring, radiator,

Bedroom2 / Study - 2.31m x 1.85m (7'7 x 6'1)

Two fitted cupboards, radiator.

Bathroom/wc - 2.03m x 2.01m (6'8 x 6'7)

Fitted with an attractive white suite comprising panelled bath with mixer tap and shower attachment, glass shower screen, vanity unit wash hand basin, closed coupled w/c, chrome heated towel rail, full tiled in ceramics, double glazed opaque sash window to rear, tiled flooring.

Externally

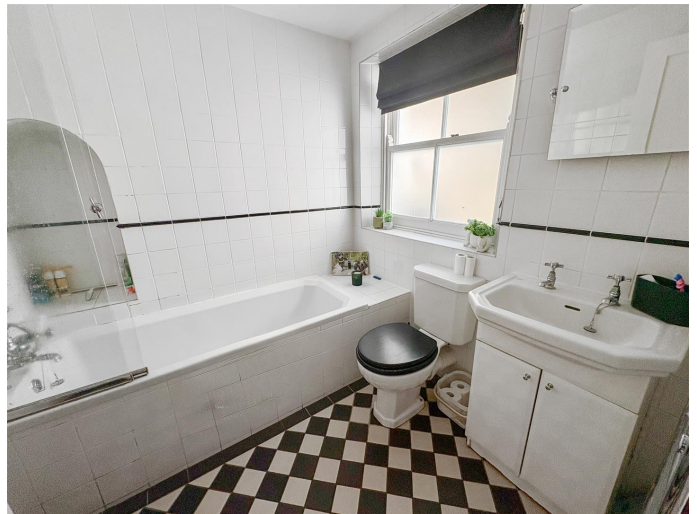
Own private L shaped West backing rear garden being laid to lawn and having flower and shrub areas, rear access via timber gate, brick wall to boundary's, cold water tap, brick built outhouse, timber storage shed.



Call us on **01702 433663** to view this property or visit [sorrellproperty.co.uk](https://www.sorrellproperty.co.uk) for more details



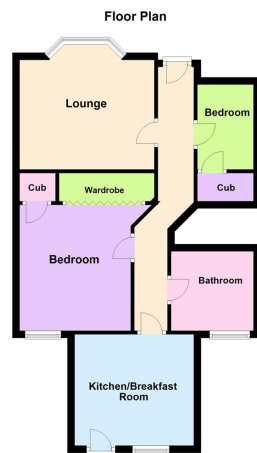
These particulars do not constitute an offer or contract, the purchaser should satisfy himself independently as to the accuracy of the measurements, description and statements contained herein. All negotiations are to be conducted via Sorrell



Call us on **01702 433663** to view this property or visit [sorrellproperty.co.uk](https://www.sorrellproperty.co.uk) for more details



These particulars do not constitute an offer or contract, the purchaser should satisfy himself independently as to the accuracy of the measurements, description and statements contained herein. All negotiations are to be conducted via Sorrell



9c Prittlewell Square, Southend on Sea

Call us on **01702 433663** to view this property or visit [sorrellproperty.co.uk](https://www.sorrellproperty.co.uk) for more details



These particulars do not constitute an offer or contract, the purchaser should satisfy himself independently as to the accuracy of the measurements, description and statements contained herein. All negotiations are to be conducted via Sorrell