



established 1919



Chartered Surveyors  
Residential Sales + Lettings  
Commercial Sales + Lettings  
Property Management  
Surveys + Professional

40 Clarence Street,  
Southend-On-Sea, SS1 1BD

t: 01702 433663

e: residential@sorrellproperty.co.uk

[www.sorrellproperty.co.uk](http://www.sorrellproperty.co.uk)



**2 bedroom House - End Terrace for sale, Danescroft Close, Leigh-On-Sea,  
£290,000**

**Full description**

Call us on [01702 433663](tel:01702433663) to view this property or visit [sorrellproperty.co.uk](http://sorrellproperty.co.uk) for more details



These particulars do not constitute an offer or contract, the purchaser should satisfy himself independently as to the accuracy of the measurements, description and statements contained herein. All negotiations are to be conducted via Sorrell

We are pleased to offer for sale this end of terrace house being situated in a popular location within 1/2 a mile of Belfairs Woods and offering no onward chain. To the ground floor are two reception rooms and a kitchen with the first floor having two bedrooms and a bathroom/wc. There are front and rear gardens and a detached garage to rear. The property requires full modernisation which has been reflected within the asking price.

### Features

- END OF TERRACE HOUSE
- TWO BEDROOMS
- TWO RECEPTION ROOMS
- GARAGE TO REAR
- NO ONWARD CHAIN

### Entrance lobby

Stairs to first floor, under stairs storage/meter area, glazed window to side, wall mounted electric heater, access through to:

### Lounge - 3.55 x 3.02 (11'7 x 9'10 )

Carpeted, wall papered walls to coved ceiling, wall mounted electric heater, arch access through to:

### Dining area - 2.68 max x 2.49 (8'9 max x 8'2 )

Double glazed sliding patio doors to rear garden, carpeted, wall papered walls to coved ceiling, wall mounted electric heater, access through to:

### Kitchen - 2.87 x 2.54 max (9'4 x 8'3 max)

Cupboard and draw base units and eye level wall cupboards, built in electric hob with electric oven under, freestanding washing machine, stainless steel sink unit with single bowl and single drainer, glazed windows to rear, part opaque glazed side door to rear garden:

### First floor landing

Access to loft, cupboard housing immersion heater tank, carpeted, wall papered walls, glazed window to side, doors off onto:

### Bedroom one - 4.47 x 2.57 (14'7 x 8'5 )

Carpeted, wall papered walls, double glazed windows to front, built in storage cupboard, wall mounted electric heater:

### Bedroom two - 3.30 x 3.08 max (10'9 x 10'1 max)

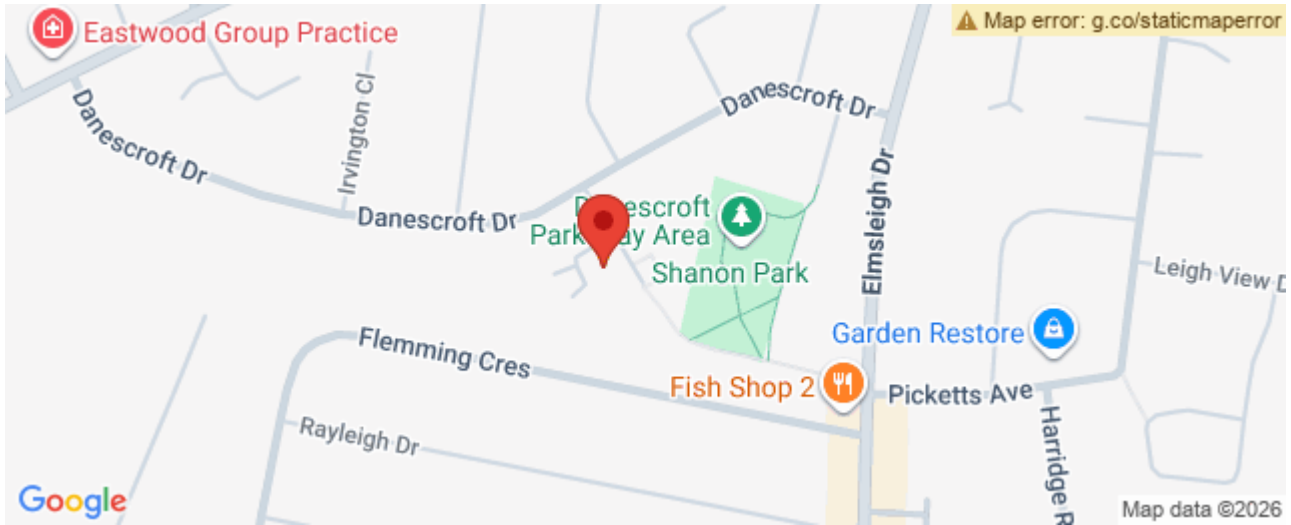
Carpeted, wall papered walls, glazed window to rear:

### Bathroom/wc - 2.30 x 1.73 max (7'6 x 5'8 max)

Panelled bath, closed coupled wc, pedestal wash hand basin, wall mounted electric heater and fan heater, tiled splash backs, opaque glazed window to rear and side:

## Externally

Front garden which is mainly laid to lawn .Medium size rear garden with flower and shrub areas, fencing to boundary's, detached garage to rear.



Call us on **01702 433663** to view this property or visit [sorrellproperty.co.uk](https://www.sorrellproperty.co.uk) for more details



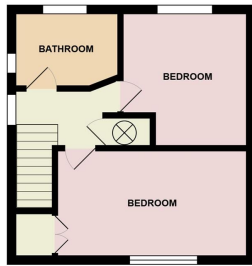
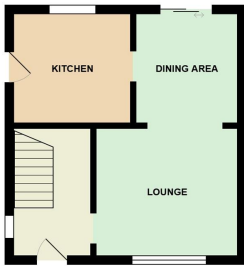
These particulars do not constitute an offer or contract, the purchaser should satisfy himself independently as to the accuracy of the measurements, description and statements contained herein. All negotiations are to be conducted via Sorrell



Call us on [01702 433663](tel:01702433663) to view this property or visit [sorrellproperty.co.uk](http://sorrellproperty.co.uk) for more details



These particulars do not constitute an offer or contract, the purchaser should satisfy himself independently as to the accuracy of the measurements, description and statements contained herein. All negotiations are to be conducted via Sorrell



23 Danescroft Close Leigh SS9 4NW

Call us on **01702 433663** to view this property or visit [sorrellproperty.co.uk](http://sorrellproperty.co.uk) for more details



These particulars do not constitute an offer or contract, the purchaser should satisfy himself independently as to the accuracy of the measurements, description and statements contained herein. All negotiations are to be conducted via Sorrell